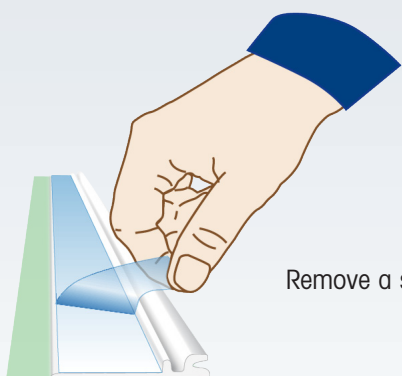
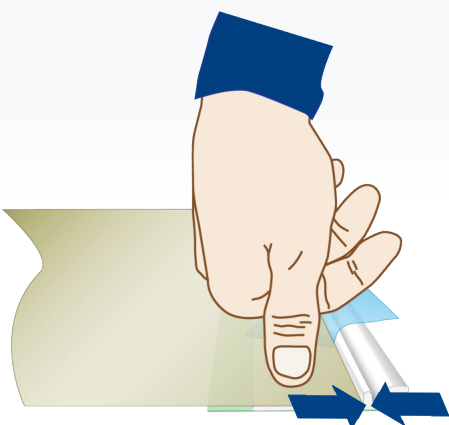


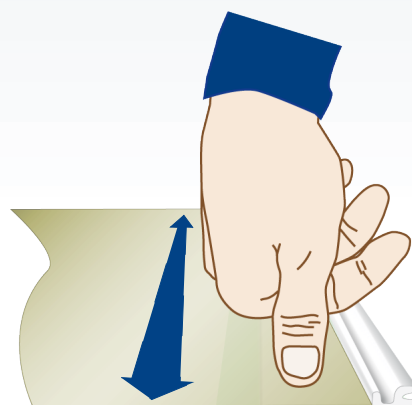
Mount the plastic strip for the Internal Roller.



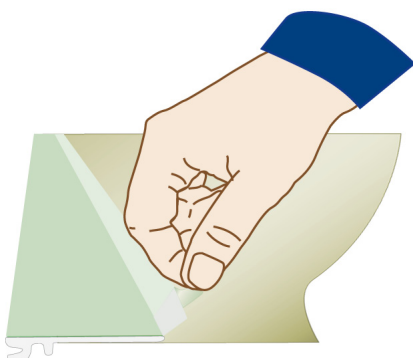
Remove a small part of the protective liner on the fronttape.



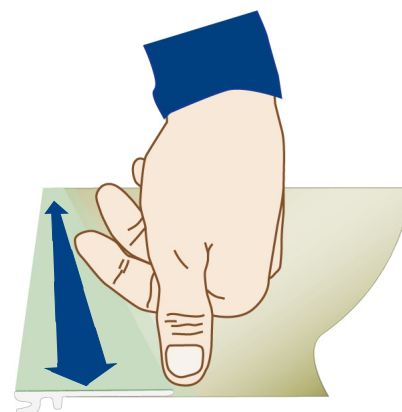
Adjust the image towards the strip and fix it to the panel strip.



Remove the remaining part of the protective liner and press the image firmly onto the panelstrip.



Turn the image around and remove the protective liner on the security tape.

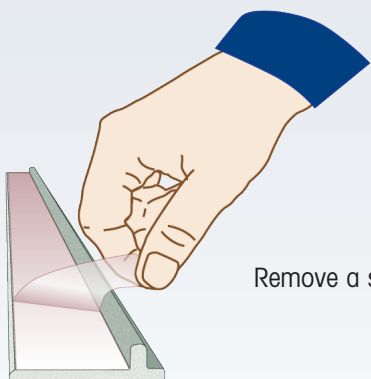


Press the security tape firmly onto the image.

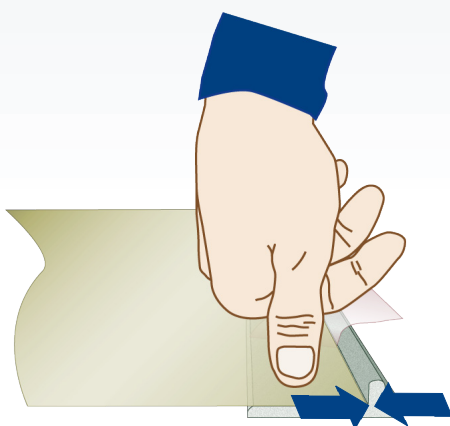


Slide on to internal roller.

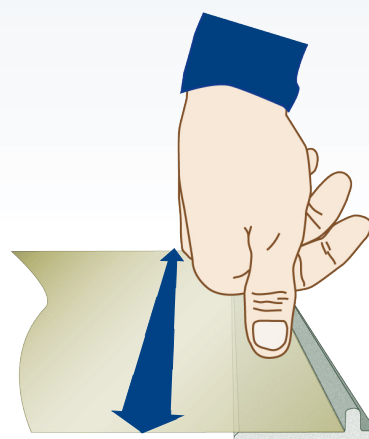
Mount the Panel Profile with Locking Clip.



Remove a small part of the protective liner on the fronttape.



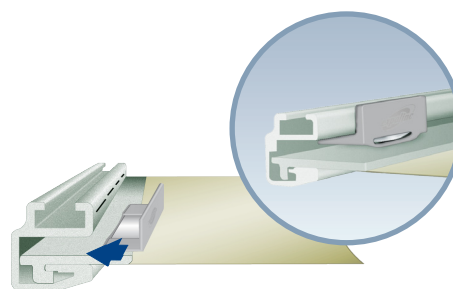
Adjust the image towards the strip and fix it to the panel strip.



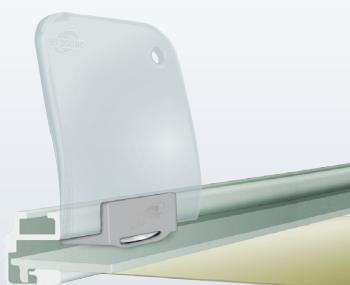
Remove the remaining part of the protective liner and press the image firmly onto the panelstrip.



Slide the top profile onto the image.



Turn the image around and push the clips into the places marked with a black line at the top profile.



Use the Expolinc tool (or similar) to remove the locking clip when changing the image.